

OpsHub Integration Manager for IBM Rational ClearCase and Rally



System Type: Source Control Management

System Description: IBM Rational ClearCase is a software configuration management solution that provides version control, workspace management, parallel development support, and build auditing. One can integrate Rational ClearCase with other IBM solutions, including IBM Rational Team Concert, IBM Rational ClearQuest, IBM Rational Asset Manager, and IBM Rational Application Developer for WebSphere Software. Rational ClearCase scales to any size team from small workgroup to large, geographically distributed teams.

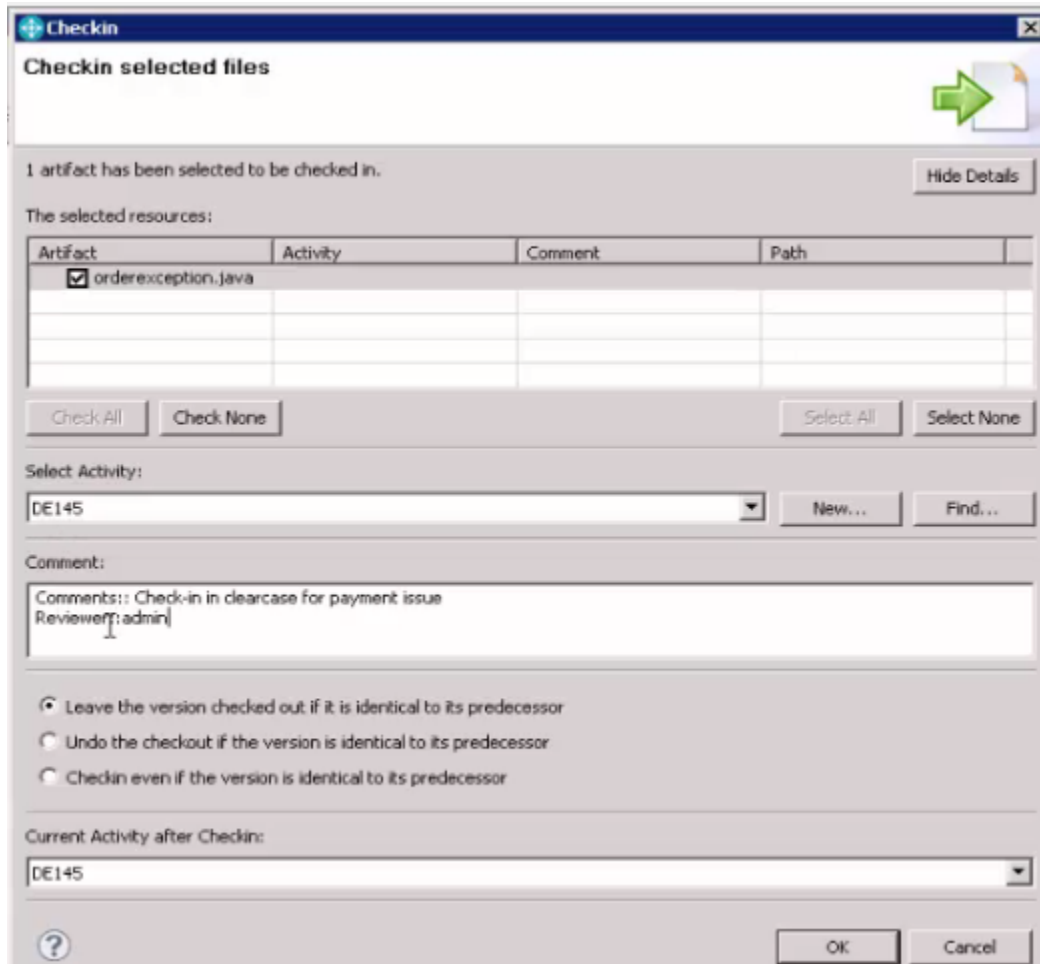
Integration Description: OpsHub Integration Manager (OIM) allows the cross-functional teams using disparate tools like IBM Rational ClearCase and Rally in application development organizations to effectively communicate and collaborate with each other, thus increasing overall team agility, productivity and efficiency.

OIM supports the synchronization of IBM Rational ClearCase commit information to all the possible entities existing in Rally viz., Defects, User Story, Test cases, Test sets, Test Case Result (Only write support), Task.

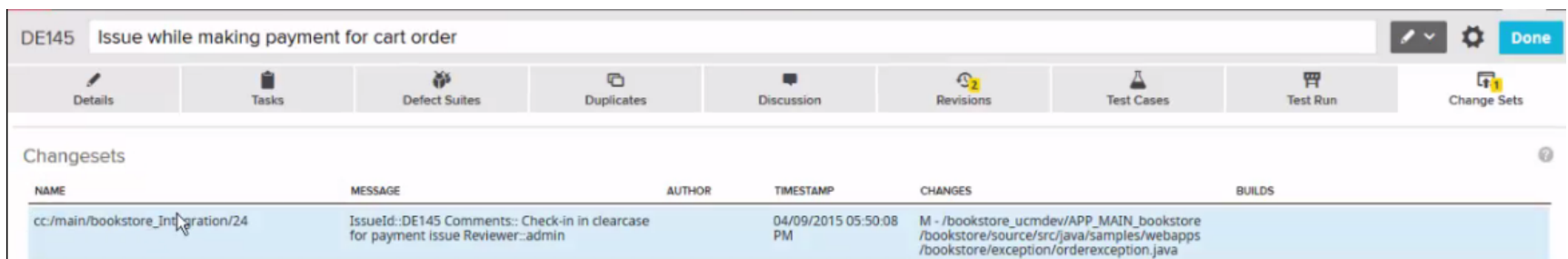
- Supports Unidirectional synchronization of IBM Rational ClearCase to Rally for all supported entities.
- The synchronization includes adding a Change Set linked to Rally artifact against which commit made is in IBM Rational ClearCase.
- User can provide commit message in form of simple text without any fixed format with Rally formatted Id specified somewhere in the commit message.
- Integration can be enabled to do other tasks like change status, add comments etc. in Rally for a given commit in Clearcase.
- Provides deployment options to fit the needs of business whether On-Premise or on Customer Cloud.
- Fully manageable and functional via the web based administration tool including defining entities for synchronization between IBM Rational ClearCase and Rally.
- Maintains history of both systems. If any of IBM Rational ClearCase or Rally becomes unavailable, it will reflect all transactions that occurred during that time once the system is operational again.
- Provides with templates and ability to define custom mapping between ALM systems to support mapping of fields and linkages.

Integration Screenshot:

User makes a commit in IBM Rational ClearCase against Rally Defect



Commit information is synced to Rally as Change Set under Defect



Integration Demo:

The video show cases the integration of two systems and how easily a user can configure integration and maintain it. The integration flow shown in video highlights the integration of IBM Rational ClearCase commit and Rally Defect. The flow will include user pushing a commit into IBM Rational ClearCase which is fetched by OIM and synced to Rally as change set entry against the Rally Defect.

Video Link: www.opshub.com/ohftp/Resources/RallyPartnershipVideos/Rally_ClearCase_v1.mp4